

MAR
2023

MANAGING RISKS IN STEVEDORING

Code of Practice for the Ports of Auckland



MANAGING RISKS IN STEVEDORING

CONTENTS

ACKNOWLEDGEMENTS	2
FOREWORD	3
SCOPE AND APPLICATION	3
1. INTRODUCTION	4
1.1 What is stevedoring?	4
1.2 Who has health and safety duties for stevedoring?	4
1.3 What is required to manage risks associated with stevedoring operations?	5
1.4 Information, training, instruction and supervision	8
2. RISK MANAGEMENT	10
2.1 Identifying the hazards	10
2.2 Assessing the risks	12
2.3 Controlling the risks	12
2.4 Maintaining and reviewing control measures	14
3. PLANNING	15
3.1 Pre-arrival planning	16
3.2 Emergency planning	16
4. INSPECTIONS	17
4.1 Vessel inspections	17
4.2 Plant inspections	18
5. THE WORKING ENVIRONMENT	19
5.1 Gangways	19
5.2 Housekeeping	20
5.3 Lighting	20
5.4 Air quality	21
5.5 Weather conditions	22
5.6 Traffic management	22
5.7 Managing the risk of falls and falling objects	26
5.8 Noise	28
5.9 Managing fatigue	28
6. HANDLING LOADS AND CARGO	29
6.1 Suspended loads	29
6.2 Lashing and unlashng containers	31
6.3 Working in ships' holds	33
6.4 Types of cargo	35
6.5 Storage, stowage and securing of cargo	37
7. PLANT AND EQUIPMENT	38
7.1 Powered mobile plant	38
7.2 Cranes	39
7.2.1 Ship-based cranes	39
7.2.2 Shore-based cranes	40
7.2.3 Crane personnel cradles or work boxes	41
7.3 Other lifting equipment	43
APPENDICES	44
APPENDIX A – KEY TERMS	44
APPENDIX B – EXAMPLE OF MANAGING RISKS IN STEVEDORING	46
APPENDIX C – EXAMPLE CHECKLIST FOR VESSEL INSPECTION – CONTAINER OPERATIONS	48
APPENDIX D – EXAMPLE CHECKLIST FOR VESSEL INSPECTION – BULK AND GENERAL OPERATIONS	50

ACKNOWLEDGEMENTS

This code has been agreed between Ports of Auckland (POAL), Maritime Union of New Zealand (MUNZ), Wallace Investments and C3.

The Safe Work Australia document 'Managing risks in Stevedoring Code of Practice' has been used as the base standard for this code with appropriate terminology and operational amendments applied.

To provide further supporting information throughout this code, references are also made to Worksafe New Zealand and Maritime New Zealand resources, including guidelines, safe working documents and web-links.



ROGER GRAY
CEO – Ports of Auckland Limited



RUSSELL MAYN
Secretary – Maritime Union of New Zealand



GAVIN HUDSON
CEO – C3 Limited



JOHN VAN AALST
Managing Director – Wallace Investments Limited

FOREWORD

A code of practice is a practical guide to achieving the standards of health, safety and welfare required under the Health & Safety at Work Act 2015 (“the Act”).

A code of practice applies to anyone who has a duty of care in the circumstances described in the code. In most cases, following a code of practice would achieve compliance with the health and safety duties in the Act, in relation to the subject matter of the code. Like regulations, codes of practice deal with particular issues and do not cover all hazards or risks which may arise. The health and safety duties require duty holders to consider all risks associated with work, not only those for which regulations and codes of practice exist.

SCOPE AND APPLICATION

This Code provides practical guidance for persons conducting a business or undertaking on how to manage health and safety risks associated with stevedoring. This Code has been developed to support the Act and applies to all workplaces where stevedoring operations are carried out at the Port of Auckland, including those of third parties.

This Code covers the loading and unloading of vessel cargo, stacking, and storing on the wharf, as well as receipt and delivery of cargo within a terminal or facility.

This Code should also be read in conjunction with good practice guidelines on specific hazards and control measures relevant to the stevedoring industry including:

- Good practice guideline: Working safely at height
- Good practice guideline: Managing work site traffic
- Good practice guideline: Safe use of machinery
- Good practice guideline: Working safety in extreme temperatures
- Good practice guideline: Exposure monitoring and health monitoring
- Good practice guideline: Health and Safety by Design
- Good practice guideline: Worker engagement, participation, and representation
- Good practice guideline: PCBU's working together: advice when contracting

HOW TO USE THIS CODE OF PRACTICE

In providing guidance, the word ‘should’ is used in this Code to indicate a recommended course of action, while ‘may’ is used to indicate an optional course of action.

This Code also includes various references to provisions of the Act and Regulations to provide context with legal requirements. These references are not exhaustive. The words ‘must’, ‘requires’ or ‘mandatory’ indicate legal requirements exist which must be complied with.

1 INTRODUCTION

1.1 What is stevedoring?

Stevedoring involves all activities directly connected with:

- loading or unloading of vessel cargo
- stacking and storing on the wharf, and
- receiving and delivering cargo within the terminal or facility.

Stevedoring operations are diverse, comprising container terminals, bulk and general stevedoring facilities. The following table provides examples of the different type of stevedoring operations.

Table 1 Different types of stevedoring operations

Stevedoring operations	Details
Containers	Loading and unloading of container cargo.
Roll on/roll off (RoRo)	Loading and unloading of cargo via ramp to vessel e.g., cars and bulldozers.
Pure car carriers (PCC)	Loading and unloading of cars only.
Break bulk	Loading and unloading of non-containerised cargo transported as individual pieces due to it being oversized and overweight e.g., construction equipment, oil and gas equipment, wind towers and steel
Bulk	A product not separately packaged but rather is loaded in bulk onto a ship e.g., grain, liquids, iron ore and coal.
Passenger vessels	Primary function is to carry passengers.

A list of key terms used in this Code is in Appendix A.

1.2 Who has health and safety duties for stevedoring?

Everyone involved in stevedoring operations has health and safety duties when carrying out the work.

A person conducting a business or undertaking (PCBU) has the primary duty under the Act to ensure, so far as is reasonably practicable, that workers and other people are not exposed to health and safety risks arising from the business or undertaking. This duty includes providing and maintaining a work environment that is without risks to health and safety. In stevedoring this duty means that a PCBU must eliminate risks arising from stevedoring, or if that is not reasonably practicable, minimise the risks so far as is reasonably practicable.

In addition to the primary duty of care, the Act Regulations include specific requirements to manage risks in areas relevant to stevedoring operations including noise, hazardous manual tasks, falls, hazardous chemicals and plant.

Duty holders include those who operate a business involved in stevedoring operations and those who have management or control of a workplace where stevedoring operations are carried out, for example ship owners and port authorities.

Designers, manufacturers, importers, suppliers and installers of plant or structures used in stevedoring operations must ensure, so far as is reasonably practicable, that the plant or structure is designed, manufactured, imported, supplied, or installed without risks to health and safety.

Further guidance is available in the *Worksafe Good Practice Guidelines: Health and Safety by Design*

Officers, including company directors, have a duty to exercise due diligence to ensure the business or undertaking complies with the Act and Regulations. This includes taking reasonable steps to ensure the business or undertaking has and uses appropriate resources and processes to eliminate or minimise risks arising from stevedoring operations.

Workers have a duty to take reasonable care for their own health and safety and must not adversely affect the health and safety of other persons. Workers must comply with any reasonable instruction and co-operate with any reasonable policy or procedure relating to health and safety at the workplace. If personal protective equipment (PPE) is provided by the business or undertaking, workers must use it in accordance with the information, instruction and training provided.

Other people at the workplace including visitors must take reasonable care for their own health and safety and must not adversely affect the health and safety of others. They must comply, so far as they are reasonably able, with any reasonable instruction given by the PCBU to allow that person to comply with the Act.

1.3 What is required to manage risks associated with stevedoring operations?

The Act requires a PCBU to manage risks associated with specific hazards including noise, hazardous manual tasks, falls, confined spaces, plant and electricity.

Section 2 provides guidance on how to manage the risks associated with stevedoring operations by following a systematic process involving:

- identifying hazards
- if necessary, assessing the risks associated with these hazards
- implementing and maintaining risk control measures, and
- reviewing risk control measures.

Further guidance on the general risk management process can be found in *Worksafe – how to manage work risks*

ENGAGEMENT OF WORKERS

HSWA - Section 58	A PCBU must consult, so far as is reasonably practicable, with workers who carry out work for them who are (or are likely to be) directly affected by a work health and safety matter.
HSWA - Section 59	If workers are represented by a health and safety representative, the consultation must involve that representative.
HSWA - Section 60	<p>Consultation is required in relation to the following health and safety matters:</p> <ul style="list-style-type: none">• when identifying hazards and assessing risks to health and safety arising from the work carried out or to be carried out by the business or undertaking.• when making decisions about ways to eliminate or minimise those risks.• when making decisions about the adequacy of facilities for the welfare of workers.• when proposing changes that may affect the health or safety of workers.• when making decisions about the procedures for:<ul style="list-style-type: none">• consulting with workers• resolving work health or safety issues at the workplace• monitoring the health of workers• monitoring the conditions at any workplace under the management or control of the person conducting the business or undertaking, or• providing information and training for workers• when carrying out any other activity prescribed by the regulations for the purposes of this section.

Engagement involves sharing of information, giving workers a reasonable opportunity to express views and taking those views into account before making decisions on health and safety matters.

Workers are entitled to take part in engagement arrangements and to be represented on work health and safety matters by a health and safety representative who has been elected to represent their work group.

In deciding how to control risks, you must consult with workers who will be affected by this decision, either directly or through their health and safety representative. Their experience may help you identify hazards and choose practical and effective control measures.

Consultation may occur through:

- general or workplace induction processes
- toolbox talks
- committee meetings
- participative risk assessment processes
- phone, email, and
- sessions or events called for a specific purpose.

Toolbox talks (or equivalent) can be used to provide information to and receive feedback from your workers as well as assist in raising the awareness of how stevedoring operations can be carried out in a safe and healthy manner. For example, toolbox talks may include discussions on:

- changes to the work environment that may impact on health and safety
- safe working instructions for particular tasks, and
- recent incidents including 'near misses' and key lessons to prevent a reoccurrence.

When using toolbox talks it is good practice to:

- keep a written record of the topic covered, attendees and feedback received
- organise a program of toolbox talks to ensure workers are given sufficient opportunity to provide input into how risks should be controlled, and
- review the effectiveness of toolbox talks and the level of worker understanding in the discussions.

CONSULTING, CO-OPERATING AND CO-ORDINATING ACTIVITIES WITH OTHER DUTY HOLDERS

HSWA - Section 34

The Act requires that where more than one person has a duty in relation to the same matter, each person with the duty must, so far as is reasonably practicable, consult, co-operate and co-ordinate activities with all other persons who have a work health and safety duty in relation to the same matter.

Stevedoring operations can involve more than one business or undertaking, each with health and safety duties. Duty holders are required to consult, co-operate and co-ordinate activities with each other. Duty holders should exchange information on planned activities and consider who is best placed to minimise or eliminate the risks.

Consulting, co-operating and co-ordinating activities with other duty holders enables each duty holder to understand how their activities may impact on health and safety and how the actions they each take to control risks are complementary.

For example, pre-planning is completed before a vessel arriving at a terminal or facility.

The stevedoring company may provide safety information and vessel inspection checklists to the ship before undertaking stevedoring operations. This gives the vessel master or their nominated representative an opportunity to co-operate with the stevedoring company to ensure the area of work is safe for the stevedores to work in and provide stevedores with information regarding safe work procedures for the ship. The stevedoring company conducts a vessel inspection upon the ship's arrival. Any safety issues are communicated to the vessel master or officer in charge. In the case of any outstanding issues, the stevedoring company or their nominated representative may meet and work with the vessel master or its nominated representative to try and resolve the issue. If the issues remain unresolved, then the stevedoring company contacts local agent or the shipping line or vessel operator to try and resolve the issue.

Further guidance on consultation is in the *Worksafe quick guide: Overlapping duties*

1.4 Information, training, instruction and supervision

HSWA – General
Risk and Workplace
Management
Regulations -
Section 9

The Act requires a PCBU to provide relevant information, instruction, training and supervision necessary to protect all persons from risks to their health and safety arising from work carried out.

PROVISION OF INFORMATION TO WORKERS

The information provided to workers including contractors undertaking stevedoring operations should include:

- results of any relevant risk assessment
- information on relevant safe work procedures, and
- manufacturer's instructions on the safe use of plant and equipment where available.

Procedures should be in place so all workers including contractors and sub-contractors are informed of the hazards and risks involved in the activities they are about to carry out, in particular at the change of shift.

TRAINING

Training in work health and safety helps to provide workers with the knowledge and skills to perform work activities safely and to identify hazards. Training should be provided to all workers undertaking work on the site including contractors, particularly as they may be unfamiliar with the working environment, organisational policies and work procedures.

Training delivery plan

Workers should be consulted when making decisions about the procedures for providing work health and safety information and training. A training delivery plan may assist with the consultation process, with identification of knowledge and skills needed and timely delivery of training to address skills gaps.

If developed, a training plan should address who is to be trained, particular competencies needed, how the training will be delivered, and the measures used to ensure workers have developed the necessary skills or competencies.

Training topics

Training should be provided by a competent person. The content and methods of presenting training material should be tailored to meet the specific needs of each group. Stevedoring specific training should be relevant to the work being carried out and include:

- the work health and safety duties of everyone involved in stevedoring operations
- the nature and extent of stevedoring hazards and risks including risk associated with the dynamic nature of the work
- hazard and incident reporting systems
- systems for reporting defects in plant or equipment used for stevedoring operations
- consultation arrangements
- safety documents, policies, procedures and plans

- safe work procedures including instruction on:
 - specific cargo management
 - use of communication systems
 - operation of vehicles, other types of plant and associated equipment
 - emergency and first aid procedures
 - when and how to use PPE including the selection, fitting, proper care and maintenance of PPE
 - other control measures
- accessing health and safety information, and
- access, egress and security.

Workplace specific training may be delivered in a variety of ways including:

- toolbox talks
- pre-start meetings
- on-the-job training
- one-off sessions or events for a specific purpose, and training courses.

Training records

Training records should be kept to assist a PCBU check what training has been provided, what extra training is needed and to demonstrate compliance with legislative requirements.

Training records may include training needs analysis documents, training plans, workers who have successfully completed training programs and the dates of completion, details of competency-based training completed, and copies of licences, certificates or other qualifications.

Review of training

Training should be reviewed and where necessary updated to reflect changes associated with the nature of hazards and risks, changes to work practices or risk control measures.

Reviewing training is important in stevedoring where the workforce may change frequently and may only be employed for short periods.

SUPERVISION

In addition to ensuring workers receive appropriate training, adequate supervision must also be provided to ensure workers, including contractors, can carry out their tasks safely. Supervisors should have the information, training and authority to competently direct and control their team's work and ensure work is done safely.

The level of supervision will depend on the nature of the hazards and risks, the experience and competence of workers and the effectiveness of existing risk control measures. High-risk or complex activities may have greater supervision requirements.

New starters or others with special needs may require more direct supervision and ongoing instructions until they can demonstrate they have the skills to perform the work safely.

COMPETENCY

Some work activities, like dogging, rigging, the operation of reach stackers, forklifts and some types of cranes, require workers to be trained and assessed as competent.

2 RISK MANAGEMENT

Risk management is a systematic process to eliminate or minimise the potential for harm to people. An example of the risk management process is at Appendix B.

2.1 Identifying the hazards

The first step in managing stevedoring risks is to find out what could potentially cause harm to people. This may be done by:

- inspecting the working environment and talking to workers about how work is carried out
- inspecting equipment and materials used during stevedoring
- reading product labels and manufacturer's instruction manuals
- talking to manufacturers, suppliers, industry associations and health and safety specialists, and
- reviewing reports of incidents, injuries and dangerous occurrences.

Table 2 lists common hazards found in stevedoring workplaces, examples of when they could occur and the potential harm they can cause. Health and safety duties require a duty holder to consider all risks associated with work, not only those mentioned in this Code.

Table 2: Hazards associated with stevedoring operations

Hazard	Examples of tasks	Potential harm
Hazardous manual tasks	Lashing and unlashings Fitting or removing twist locks Working above shoulder height	Strains and sprains Cuts and abrasions
Working at height	Working near an open hatch Accessing cargo Climbing ladders	Falls causing disabling injury or fatality
Working in restricted or enclosed spaces	Working in holds Working in between cargo	Crush injuries Respiratory conditions Fatalities
Falling objects	Working with suspended cargo or unsecured loads	Crush injuries Fractures Fatalities
Plant and equipment	Working in and around mobile plant e.g., straddle carriers, internal transfer vehicles (ITVs), reach stackers, rubber tyred gantries (RTGs) and forklifts damaged or poorly maintained equipment like damaged ladders, electrical cables, ropes, stretched chains and defective hooks	Crush injuries Disabling injuries Fatalities

Hazard	Examples of tasks	Potential harm
Working environment	Working in extreme weather conditions Working in holds and on deck Working near refrigerated containers	Sunburn and skin cancer Heat stress, strains and sprains due to slips and trips Fumes or atmospheric contaminants
Electricity	Lashing next to refrigerated containers Jump starting vehicles Isolating equipment	Electric shock Burns Fatalities (electrocution)
Stored energy	Pressurised liquids and gases Tensioned cable or ropes	Disabling injuries Fatalities
Noise	Using noisy machinery or power tools	Hearing loss
Hazardous chemicals including dangerous goods	Loading and unloading hazardous cargo Exposure to chemicals used to fumigate ship's holds	Respiratory conditions Burns Skin conditions Fatalities
Fire	Hot works e.g., welding or oxycutting Handling combustible cargo	Burns Smoke inhalation Fatalities
Lighting	Working in inadequate light for instance in holds or at night	Slips, trips and falls
Failure to follow safety procedures	Using incorrect lifting gear Not verifying safe working load Not checking service history where required	Crush injuries Fatalities

A few hazards may co-exist in the workplace, for example stevedoring operations may involve being near moving parts and performing hazardous manual tasks in the presence of high noise levels.

Hazards may also change as work is carried out, for example entries and exits may become blocked preventing escape in emergencies.

2.2 Assessing the risks

A risk assessment involves considering what could happen if someone was exposed to a hazard—the consequence—and the likelihood of this happening. A risk assessment can help you determine:

- if there is further action you should take to control the risk, and
- how urgently the action needs to be taken.

If you already know the risk and how to control it effectively, a risk assessment may be unnecessary. However, if circumstances or conditions change then the risk needs to be re-assessed.

Factors to consider when assessing risks from stevedoring operations include:

- the type of work being performed
- how many people are exposed
- communication methods and effectiveness
- the suitability of vehicles and equipment for the activity e.g., ropes and lifting gear
- time of day and hours of work
- the training, experience and competence of workers
- the work environment, and
- fatigue management.

2.3 Controlling the risks

The ways of controlling work health and safety risks are ranked from the highest level of protection and reliability to the lowest. This ranking is known as the *hierarchy of risk control*.

The highest level and most effective control is elimination where the hazard is completely removed. You must always aim to eliminate a hazard. If this is not reasonably practicable, you must minimise the risk by working through the other alternatives in the hierarchy.



Table 3 The hierarchy of control measures

Level	Control
Level 1	<p>Elimination – the most effective control measure is to remove the hazard or hazardous work practice. For example, eliminate the need for workers to carry out work at heights by replacing manual twist locks with automatic twist locks.</p> <p>If elimination is not reasonably practicable, you must minimise the risk by following the control measures in the hierarchy below.</p>
Level 2	<p>Substitution – substitute the work practice or equipment with something safer. For example, substitute a hazardous chemical with a less hazardous chemical.</p> <p>Isolation – physically separate the source of harm from people by distance or by using barriers. For example, use physical barriers to separate pedestrians from mobile plant.</p> <p>Engineering controls – are physical control measures including mechanical devices or processes. For example, install guards on conveyor systems or speed limiters on forklifts.</p>
Level 3	<p>Administrative controls – if a risk remains, it must be minimised with administrative controls like training workers to use safe work procedures, using warning signs or arranging work to minimise the time spent near noisy machinery.</p> <p>PPE – any remaining risk must be minimised with suitable PPE, for example by providing workers with high visibility clothing, gloves, non-slip footwear, and hearing and eye protection.</p>

Administrative control measures and PPE do not control the hazard at the source. They rely on human behaviour and should only be used:

- when there are no other practical control measures available—so as a last resort
- as an interim measure until a more effective way of controlling the risk can be used, and
- to supplement higher level control measures—as a back-up.

In many cases a combination of control measures provides the best solution.

When selecting and implementing a combination of control measures it is important to consider whether new risks might be introduced as a result and, if so, whether the combination of the control measures should be reviewed.

2.4 Maintaining and reviewing control measures

HSWA – General
Risk and Workplace
Management
Regulations
– **Section 8**

Control measures must be maintained so that they continue to protect workers and other people from the hazards associated with plant. The control measures must be:

- fit for purpose
- suitable for the nature and duration of the work, and
- installed, set up and used correctly.

A PCBU must review and as necessary revise control measures:

- when the control measure is not effective in controlling the risk
- before a change at the workplace that is likely to give rise to a new or different health and safety risk that the control measure may not effectively control
- if a new hazard or risk is identified
- if the results of consultation indicate that a review is necessary, and
- if a health and safety representative requests a review.

Reviewing the hazard and the risk controls is an important part of the risk management process. The aim is to ensure:

- the implemented controls are effective and working
- there are no risks previously not identified
- circumstances or practices have not changed that have introduced other hazards, and
- opportunities may now exist to manage the risk with a higher level of control.

A review can be done by using the same methods as the initial hazard identification process. Common methods include workplace inspection, consultation, and testing and analysing records and data. Reviewing the control measures also involves considering whether a higher order control measure is now reasonably practicable.

You should consult your workers and health and safety representatives as part of the review process and consider the following questions:

- Are all foreseeable hazards being identified?
- Are the control measures working effectively in both their design and operation?
- Have the control measures introduced new problems?
- Has instruction and training provided to workers been successful?
- Is the frequency and severity of health and safety incidents reducing over time?
- If new legislation or new information has become available, does it indicate the current controls may no longer be the most effective?
- Have changes occurred affecting health and safety, for example has new plant or equipment been introduced? Are new procedures required?

If areas are identified for a change or improvement, review your information and make further decisions about risk control.

3 PLANNING

3.1 Pre-arrival planning

Stevedoring operations should be planned before the cargo arrives to identify potential hazards, assess risks and determine appropriate control measures in consultation with relevant parties. This may include the port authority, shipping agents or companies, transport companies and other duty holders in the supply chain.

In the planning stage you should consider:

- load and discharge sequences—the order of work
- pre-work inspections
- vessel type, cargo type e.g., heavy lifts and presentation
- the length of time required to do the work
- allocation of resources e.g., people, plant and skills, and
- weather conditions, time of day, tide levels and surge impact.

3.2 Emergency planning

EMERGENCY PLANS

HSWA – General
Risk and Workplace
Management
Regulations
– Section 14

A PCBU must ensure that an emergency plan is prepared for the workplace that provides for:

- emergency procedures, including:
- an effective response to an emergency
- evacuation procedures
- notification of emergency services at the earliest opportunity
- medical treatment and assistance; and
- effective communication between the person authorised by the PCBU to co-ordinate the emergency response and all persons at the workplace.
- testing of the emergency procedures, including how often they should be tested, and
- information, training and instruction to relevant workers in relation to implementing the emergency procedures.

Emergency plans should be site-specific, covered in induction training and made known to visitors.

Ship emergency plans affecting stevedoring operations should be checked during the vessel inspection and followed in an emergency. Assembly points where people can safely go in an emergency should be identified during the inspection.

Shore emergency plans should include:

- allocation of roles and responsibilities for specific actions in an emergency to people with appropriate skills, for example appointment of area wardens
- access and exit for retrieval and escape including a contingency plan for alternative access and exit
- safe and timely evacuation procedures e.g., evacuation checklists and procedures for assisting injured people
- warning systems and what to do when they activate
- shutting down of equipment e.g., cranes
- planning for drills e.g., to ensure alarms are audible to everyone
- fire risks and provision of firefighting and rescue equipment at appropriate locations
- the establishment of a reliable means of communication between workers to ensure effective evacuation of danger areas including a backup communication system in case of a failure of the primary system
- a readily accessible communication system to contact necessary emergency services
- the display of evacuation procedures in appropriate locations, and
- access for emergency services like ambulances.

Regular refresher training should be provided to workers and procedures established and maintained to ensure there is effective communication between ship—the vessel master—and shore—stevedores. Further information on emergency plans is in the *Worksafe Fact Sheet: Emergency Plans*.

See section 7.2.2 for information on emergency procedures for cranes.

FIRST AID ARRANGEMENTS

HSWA – General
Risk and Workplace
Management
Regulations
– Section 13

A PCBU must:

- provide first aid equipment and ensure each worker at the workplace has access to the equipment
- ensure access to facilities for the administration of first aid, and
- ensure that an adequate number of workers are trained to administer first aid at the workplace or that workers have access to an adequate number of other people who have been trained to administer first aid.

First aid kits must be accessible at the workplace.

Further guidance on providing first aid and the contents of first aid kits is in *Worksafe quick guide: first aid at work*

4 INSPECTIONS

4.1 Vessel inspections

The vessel type and condition of its equipment and gear may impact on safety.

Before commencing stevedoring operations, a vessel inspection should be carried out to identify potential risks for stevedoring operations. The condition of the work area should be assessed before starting work and then monitored throughout the loading and discharge process.

Some points to consider when conducting a vessel inspection include:

- working environment including access and egress
- cargo presentation, and
- condition of the ship's lifting equipment if it will be used during the work.

The use of checklists can assist in identifying hazards. Examples of checklists for container operations and bulk and general operations are provided at Appendix C and Appendix D.

Health and safety representatives and other personnel like the vessel master or their delegated representative may participate in vessel inspections.

Work procedures should support the implementation of inspections and ensure relevant follow-up actions are taken. There should be a process for dealing with unresolved issues.

ACCESS ON BOARD SHIPS

Access routes should be checked during the vessel inspection and any issues addressed in consultation with the vessel master.

Some points to check include:

- access routes are tidy, adequately illuminated and clear of obstructions
- hinged and pontoon hatch covers are secured to prevent them from accidentally closing during access
- there is sufficient space between containers to accommodate work being carried out safely, and
- there are two means of access where work will be carried out in a cargo space.

The *ILO Code of Practice: Safety and health in ports* provides detailed guidance on access on board ships.

WORKING AREA

The vessel inspection should check housekeeping practices on the vessel including:

- suitable storage areas for tools and equipment including lashing bars are identified and used
- loose items that may create a hazard from potential vessel movement are secured, and
- reefer cables have been secured before unloading to ensure no snagging of loose hanging cables.

Before lashing and unlashings, check for the following:

- equipment faults including any which may affect the integrity of the fall restraint safety system, for example jagged metal on railings or containers
- lashing gear is undamaged and in serviceable condition
- outboard cells are provided with safety rails sufficient to prevent a person falling overboard
- railing—top and mid-rail— is provided around open hatches and outboard cells including safety chains. Where rails are made of rope or wire ensure they are taut and in good condition, and
- electrical cables are stowed away from walkways wet areas, and power is disconnected in proximity to lashing activities.

CARGO PRESENTATION

Working conditions and circumstances may change significantly during transit. The inspection should check cargo in the work area has not moved during the voyage and that lashing is secure for cargo adjacent to the work area not being discharged. Identified changes in the condition of cargo should be rectified where reasonably practicable or communicated to relevant people in other ports.

4.2 Plant inspections

There are specific requirements under the Act Regulations for the inspection of plant including cargo gear and cranes—see section 7.

HSWA – Subpart 2,
Duties of PCBU's

A PCBU must ensure the provision of the provision of and maintenance of safe plant, structures and safe systems of work. They must supply any information, training, instruction or supervision that is necessary to protect all persons from risks to their health and safety.

The inspection of plant should identify problems that may compromise its safe operation, for example wear and tear, corrosion and damaged parts.

Further information is available in the *Worksafe Good Practice Guideline: Safe use of Machinery*

5 THE WORKING ENVIRONMENT

HSWA – General Risk and Workplace Management Regulations – Section 10

A PCBU must ensure, so far as is reasonably practicable, that:

- the layout of the workplace allows, and is maintained to allow persons to enter and exit the workplace and move within it safely, both under normal working conditions and in an emergency
- work areas have space for work to be carried out safely
- floors and other surfaces are designed, installed and maintained to allow work to be carried out safely
- lighting enables each worker to carry out work safely, persons to move around safely and safe evacuation in an emergency
- ventilation enables workers to carry out their work without risk to their health and safety
- workers exposed to extremes of heat or cold are able to carry out work without risk to their health and safety.

5.1 Gangways

The master of a ship in port must follow industry best practices and procedures as per their respective ISM code to ensure there are safe means of access to the ship.

The means of access from the wharf to a vessel's deck may be provided by the vessel or the shore terminal. Gangways and walkways for access between the shore and the ship should be placed:

- so no loads pass over them
- where access to it won't be obstructed, and
- where it can't be struck by moving traffic on a crane track, railway track, or other route.

If this is not practical during stevedoring operations, then the means of access should be supervised to ensure the above conditions are met while they are in use.

Gangways, walkways and handrails should be in good condition and free from obstructions and residue build-up. They should remain rigged during loading and unloading.

5.2 Housekeeping

Housekeeping practices should be implemented to control risks on shore and on vessels. Designated storage areas should be provided for loose items, for example twist lock bins, to ensure these are correctly stored.

Goods and materials not in containers or vehicles should be kept in stable and orderly stacks or piles on firm and level surfaces.

More information about workplace requirements is in the *Worksafe Fact Sheet: Workplace and facilities requirements*

5.3 Lighting

Adequate lighting must be provided and maintained to ensure stevedoring operations can be carried out safely. Examples of lighting include external lighting towers, portable lights and crane lights.

Suitable deck and under-deck lighting on vessels should be provided for the task being carried out particularly for:

- access routes including access to lifting equipment
- ladders providing access to the ship, and
- working areas on board and adjacent to the ship.

Lighting levels should provide sufficient light for night-time operations as well as enabling good visibility in cargo holds, considering glare, reflections or shadows. If portable lighting is used on vessels, electrical cables should be protected from accidental damage and positioned to prevent trip hazards.

5.4 Air quality

Emissions from plant and substances in ships' holds and storage areas may create hazardous atmospheres. Where there is a likelihood of reduced air quality that may affect health and safety, for example contaminated, oxygen-deficient or explosive atmospheres, a risk assessment should be carried out and relevant control measures implemented. Control measures may include:

- providing measures for detecting hazardous atmospheres
- providing natural or mechanical ventilation to prevent accumulation of harmful concentrations of gases, fumes, vapours and fumigants
- eliminating use of combustion-powered plant or equipment in poorly ventilated spaces e.g., by using electric forklift trucks
- managing the length of time plant is used e.g., switching off engines when not in use or limiting the number of vehicles allowed to run at one time
- providing access to safety data sheets (SDS) for hazardous chemicals
- training workers in emergency response related to hazardous atmospheres, and
- providing appropriate PPE like respiratory equipment and ensuring these are properly fitted, worn and maintained.

Where fumigation has been carried out, control measures include checking workers do not enter fumigated areas until these areas have been ventilated and are assessed as safe to enter.

Further guidance on managing the risks associated with contaminated or-deficient atmosphere is in the *Worksafe: Managing your hazardous substances* and/or *Worksafe: Workplace Health and Exposure monitoring*

In some circumstances a ship's hold may meet the definition of a confined space under the Act Regulations, for example where there is a risk to health and safety from harmful concentrations of an airborne contaminant. Information on working in confined spaces is in the *Worksafe Quick Guide: Confined spaces: planning entry and working safely in a confined space*

5.5 Weather conditions

A severe weather policy should be established through a risk assessment that considers how changes in weather may impact safe working practices, for example:

- when operating in proximity to reefers in wet conditions
- in high winds or when lightning is present
- stability of container stacks in high winds
- when conditions create poor visibility
- in periods of extreme low or high temperatures, and
- during periods of high solar ultra-violet (UV) radiation.
- working on top of containers

Control measures may include:

- using weather forecasts to plan activities
- fitting equipment and infrastructure with devices to manage the risk of lightning strike
- using wind speed measuring devices e.g., anemometers on plant like cranes and ceasing activities when safe levels are exceeded
- stacking containers so they are stable
- providing drinking water, appropriate breaks and shelter in extreme heat, and
- providing suitable PPE like wet weather gear and sun protection like a wide brim hat, long sleeved shirt, long pants, sunglasses and sunscreen.

Information about managing cranes in adverse weather conditions is in section 7.2 Cranes.

Further information about managing the risks associated with working in extremes of heat and cold is in the *Worksafe: Working safely in extreme temperatures*



5.6 Traffic management

There is a risk of death and injury in workplaces where vehicles, mobile plant and people share the same work areas.

HSWA – Subpart 2,
Duties of PCBU's

PCBU's that manage or control fixtures, fittings or plant at a work site must, so far as is reasonably practicable, make sure that these fixtures, fittings or plant don't create health and safety risks. This could include consideration of the potential health effects from using the plant (for example, the long-term exposure to exhaust fumes from a forklift).

VESSEL AND LANDSIDE

Where reasonably practicable the work environment should be designed so vehicles and powered mobile plant are separated from pedestrians.

When managing traffic risks in ports you should consider:

- vehicle and pedestrian movements
- on the wharf
- on and off ships
- on decks and in cargo storage, receipt and delivery areas within the terminal or facility
- during truck loading and unloading, reversing, queuing and parking activities
- controlling contractor and visitor movement at the site, and
- the condition of travel surfaces.

TRAFFIC MANAGEMENT PLANS

The development of a traffic management plan assists in managing risks and communicating information about control measures.

A traffic management plan should be developed in consultation with workers. It can provide details about:

- the desired flow of pedestrian and vehicle movements
- the expected frequency of interaction of mobile plant, vehicles and pedestrians
- traffic controls for each expected interaction including illustrations of the layout of barriers, walkways, signs and general arrangements to warn and guide traffic around, past, or through a work site or temporary hazard
- exclusion zones
- roles and responsibilities of people in the workplace for traffic management, and
- instructions or procedures associated with the control of traffic including in an emergency.

Traffic management plans should be updated to address changes in traffic movements.

More information about how to manage traffic at a workplace is in *Worksafe Good practice guidelines: Managing work site traffic*

COMMON USER FACILITIES

In managing common user facilities, particularly when more than one business or undertaking may be working in the same area, traffic routes for neighbouring operations should be considered to ensure different activities can be safely carried out without increasing the risk.

The common user operator should develop a traffic management plan in consultation with the relevant stakeholders working onsite. Each stevedoring company should develop its own traffic management plan.

ROLL ON/ROLL OFF (RORO) AND PURE CAR CARRIERS

A traffic management plan should be implemented to control vehicle and pedestrian movements for each entrance and exit ramp and for ramps within the vessel. Where the ramp design prevents physical separation other control measures should be used to prevent the simultaneous use of the ramp by vehicles and pedestrians.

Workers involved in the operations should be kept informed of this plan and of changes to it.

When preparing a traffic management plan for RoRo or PCC you should consider using:

- traffic configurations
- speed limits
- co-ordination of RoRo activities across multiple decks
- management of pedestrian movement including separating pedestrians from vehicles on ramps by using separate walkways or separate access times, and
- management of multi-use roadways.

Before the start of RoRo operations hazardous routes or areas that could be mistaken for normal drive-on drive-off routes should be identified. These routes should then be clearly marked. Suitable warning notices should be posted on the ramp.

A nominated person—a competent signaller or guide—should direct all vehicles being reversed or manoeuvred into stowage positions on deck.

A safe system of work should be implemented to manage the movement of vehicles on decks. This should consider vehicle speeds, restricted driver visibility, safe stowage or positioning, and whether other activities are being carried out at the same time.

A person guiding a vehicle into a final position on the vessel should wear high visibility clothing and ensure they are always visible to the driver, either directly or via vehicle mirrors. Where this is not possible, they must position themselves clear of the vehicle and trailer movement and away from the risk of being trapped or crushed. Before signalling a driver to proceed they must ensure it is safe to do so.

Signals for guiding drivers, like using a hand signal to indicate an emergency stop, should be agreed and understood before starting work. Only authorised people should be on deck while loading or discharging operations are being carried out and everyone should be provided with high-visibility clothing.

TRAFFIC MOVEMENT WITHIN A TERMINAL OR FACILITY

Truck routes and loading and unloading points should be marked out or otherwise indicated.

Loading and unloading areas should be clear of other traffic, pedestrians and people not involved in the activity.

Trucks should not be loaded or unloaded in any other position without permission of the supervisor or foreman. Truck ranking should not be allowed inside the loading and unloading areas and the vehicle twist locks should be released after entry and locked before exit from the site.

Truck drivers should follow site safety rules and traffic management plans including being aware of exclusion or no-go zones when loading or unloading. Traffic management includes designating safe zones for the driver to exit the cab to allow for the release of twist locks. If there are no site rules a risk assessment should be carried out to determine the safest location for the driver and other workers.

Movement of vehicles in cargo storage areas

Where vehicles are used to handle cargo, the area should be kept separate from pedestrians and other operations, where practicable. Barriers should be used where pedestrian routes are adjacent to stacking areas to prevent collision between equipment and people. Signs should be displayed warning unauthorised entry to the area is prohibited.

Reversing vehicles

Where practicable, design the flow of traffic to minimise reversing. Where it is necessary to reverse vehicles, control measures may include:

- helping drivers detect movement around the vehicle through mirrors, reversing cameras, sensors and alarms
- using visual warning devices like flashing lights
- having high-visibility markings for powered mobile plant, and
- ensuring the provision and use of effective communication systems e.g., between signallers and drivers and between plant operators including straddle carriers and trucks.
- designated reversing areas by engineering design
- designated pedestrian walkways

Vehicles queuing and parking

Work areas should have clearly visible speed limit signs and lines showing truck queuing and vehicle parking areas. In order to control unexpected truck queuing and congestion a truck marshalling area can be used.

Private vehicles should be kept separate from stevedoring operations.

LANDSIDE - STRADDLE CARRIERS

Straddle carriers often operate in proximity to other vehicles and pedestrians. Where straddle carriers are used you should ensure:

- a straddle carrier grid is maintained for the safe movement of vehicles and loading and unloading operations, and
- safe areas are designated within the grid to allow safe manoeuvring of straddle carriers, other vehicles and movement of workers.

A safe system of work for the loading and unloading of trucks should be part of the traffic management plan.

Grids

Loading and unloading containers from road vehicles should be carried out on identified straddle carrier exchange grids. Grids provided for straddle carriers to load or unload containers from road vehicles should be clearly marked and not used as general waiting areas for road vehicles.

Where possible a straddle carrier should:

- approach a road vehicle from the rear during loading or unloading and then leave the vehicle by moving away from the vehicle's rear, and
- approach a grid slot from the opposite direction of road vehicles.

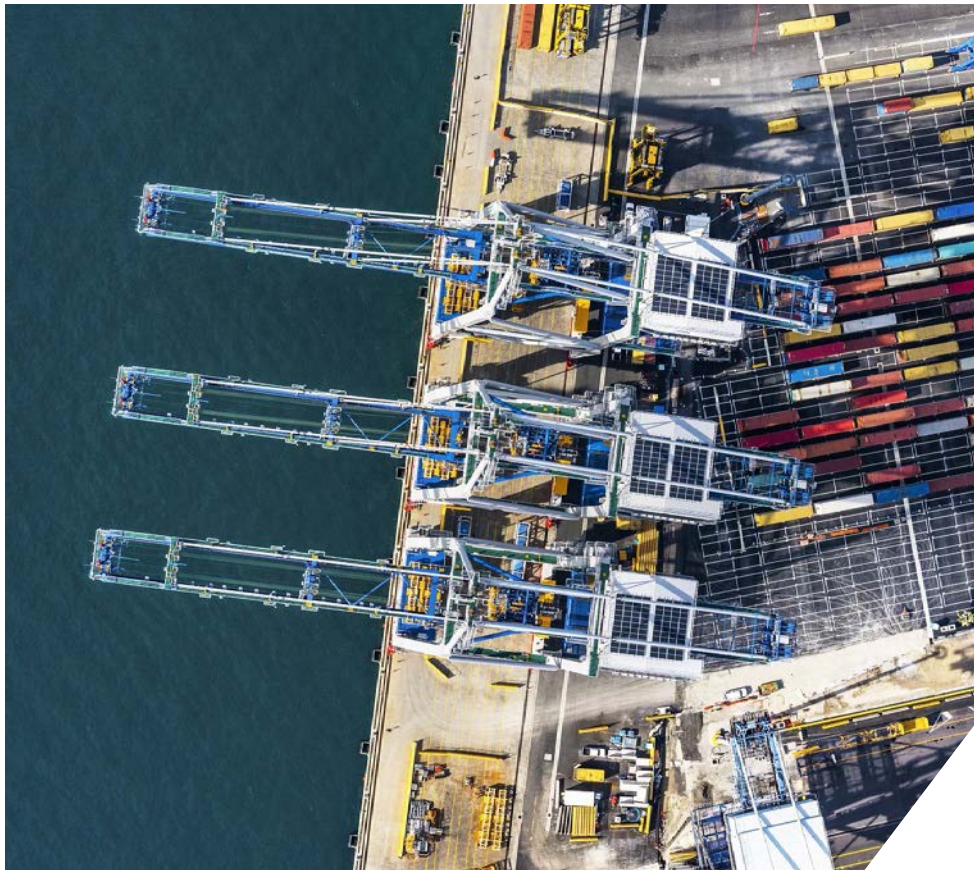
Ample space should be provided for road vehicles to reverse into a slot on a grid safely if this manoeuvre is necessary. Any oversize container or problem container that cannot be handled safely at the grid should be moved to a suitable designated area where it can then be handled.

Safe areas – vehicle drivers

A designated safe area where drivers of road vehicles can stand while containers are being lifted onto or off their vehicles should be provided and clearly marked. The safe area should be located so people in it are clearly visible to drivers of straddle carriers as they approach. If the area is located between slots the size of the area should be determined for the grid layout, the width of the straddle carriers and other relevant operational factors.

When loading or unloading a road vehicle the driver should leave the cab of the vehicle and stand in a clearly marked area before the approach of a straddle carrier. This area should be forward of the cab of the vehicle, a safe distance from the vehicle and visible to the straddle carrier operator. The driver should remain in the marked area throughout the loading or unloading operation and not return to the cab until the straddle carrier has left the grid.

The straddle carrier operator should not approach the grid if the driver of the truck cannot be seen.



5.7 Managing the risk of falls and falling objects

Working at height including accessing the hold of a ship or working on top of containers involves the risk of a fall.

HSWA – Subpart
2, Duties of
PCBUs

The HSE Act requires that if there is a potential for a person at work to fall from any height, reasonable and practicable steps must be taken to prevent harm from resulting.

Stevedoring operations where control measures for fall prevention are required include when:

- accessing the ship's decks, hatchways and holds
- using ladders, stairs, ramps, landing stages and gangways
- working in the vicinity of holes or cavities on board ship e.g., near hatchways or on top of cargo where voids are created during discharge and loading
- working on top of containers
- working on equipment at an elevated height, and
- accessing crane cabins.

For example, if it is necessary to access the top of a container safe means of access including a work box or personnel cradle should be provided and used in accordance with section 7.2.3. If this equipment is not available, fall arrest equipment must be worn.

More information about how to manage the risks of working at heights is in the *Worksafe: Working at height*

SHIP MOVEMENT AND RAMPS

Pontoons supporting shore ramps or passenger walkways should be as steady as practicable in all weather and tide conditions. They should be capable of withstanding the maximum forces to which they may be subjected during mooring. This should include likely ramp movement resulting from the local tidal movements and ranging and drifting of the ship or pontoon at its moorings. Walkways should be designed to tolerate forces in all three planes and torsional forces. Transitional flaps at their ends should be included if necessary.

FALLING OBJECTS

HSWA – General
Risk and Workplace
Management
Regulations
– Section 25

Managing risks associated with falling objects:

A PCBU must manage, risks to health and safety associated with a falling object if the object is reasonably likely to fall on and injure a person.

If it is not reasonably practicable to eliminate the risk referred to in subclause (1), the PCBU must minimise the risk by providing and maintaining a safe system of work that includes—

1. measures for preventing an object from falling freely, so far as is reasonably practicable; or
2. if it is not practicable to prevent the object from falling freely, a system to arrest the fall; or
3. if it is not reasonably practicable to comply with paragraph (a) or (b), providing an exclusion zone that persons are prohibited from entering

Falling objects pose a significant risk when carrying out stevedoring operations. Control measures may include:

- using the appropriate equipment to raise and lower cargo including ensuring that safe working load (SWL) is not exceeded — see section 7
- stacking containers and other cargo so they are stable
- providing overhead protective structures on mobile plant to protect plant operators, and
- establishing exclusion zones where loads are being lifted overhead.



5.8 Noise

A PCBU at a workplace must manage risks to health and safety relating to hearing loss associated with noise and ensure that the noise that a worker is exposed to at the workplace does not exceed the exposure standard for noise.

A PCBU must provide audiometric testing for a worker who is carrying out work for the business or undertaking if the worker is required to frequently use personal hearing protectors as a control measure for noise that exceeds the exposure standard.

Noise monitoring provides a means of assessing noise levels and length of exposure and the data obtained can be used to determine suitable control measures to minimise the risk of hearing loss.

Noise from vehicles, engines and transmission equipment used in an enclosed space like a ship's hold may be hazardous to operators in the vicinity.

Further guidance on the noise exposure standard, control measures and audiometric testing is in the *Worksafe: Managing noise risks*

5.9 Managing fatigue

Fatigue is more than feeling tired and drowsy. In a work context, fatigue is a state of mental and/or physical exhaustion which reduces a person's ability to perform work safely and effectively.

Fatigue increases the chance of workplace injuries and if prolonged can negatively affect a person's health and wellbeing.

Control measures for managing fatigue include providing workers with adequate breaks between shifts.

A fatigue management plan may be developed to help control the risks of fatigue. It may include procedures for managing:

hours of work or shift rostering are designed to minimise fatigue, and environmental conditions e.g., working in adverse weather contributes to fatigue and individual factors.

Workers must also co-operate with any reasonable policy or procedure relating to fatigue at the workplace, for example policies on fitness for work or second jobs.

Workers' duties in relation to fatigue do not mean they must never work extra hours. However, they should talk to their manager or supervisor to let them know when they are fatigued. They should also avoid working extra hours and undertaking safety critical tasks when they know it is likely they are fatigued.

Further information is in the *Port Health & Safety Leadership Group Good Practice Guidelines: Building a fatigue risk management system* or *Worksafe quick guide: Fatigue*

6 HANDLING LOADS AND CARGO

There should be safe work procedures for loading and unloading. If the procedures do not address the hazards of the work to be carried out, then a risk assessment should be done.

6.1 Suspended loads

The person with management or control of plant at a workplace must ensure, so far as is reasonably practicable, that plant that is used to lift or suspend persons or things is specifically designed to lift or suspend the load. If it is not reasonably practicable to use plant that is specifically designed to lift or suspend the load, the person must ensure that the plant does not cause a greater risk to health and safety than if specifically designed plant were used.

The person must ensure that the lifting and suspending is carried out with lifting attachments that are suitable for the load being lifted or suspended, and within the safe working limits of the plant.

The person must ensure, so far as is reasonably practicable:

- that no loads are suspended or travel over a person unless the plant is specifically designed for that purpose.
- that loads are lifted or suspended in a way that ensures that the load remains under control during the activity, and
- that no load is lifted simultaneously by more than 1 item of plant unless the method of lifting ensures that the load placed on each item of plant does not exceed the design capacity of the plant.

Handling suspended loads is a high-risk activity and involves various plant including mobile, vessel and gantry cranes, forklifts and other specialised cargo handling equipment. A risk assessment should be carried out. Control measures for handling suspended loads may include:

- implementing exclusion zones to ensure workers are clear of the active arc of suspended travel while suspended loads are being lifted or lowered, and
- prohibiting working or walking under suspended loads.

COMMUNICATION

A reliable way for the crane operator and any person directing the load to communicate is essential for safe crane operation. Failure to implement reliable communication may lead to unsafe crane operations and contribute to injury to or death of people from:

- dropped loads, and
- collision with other plant and structures.

Only one person should give signals at one time. Signals may be visual, audible or a combination of both. When more than one person is involved in directing a lift each person should understand when responsibility for their part of the lifting operation should be handed over to the other person.

Effective communication is particularly important where the crane operator cannot:

- see the load
- see the load's landing area
- see the path of travel of the load or the crane
- make an accurate judgement of distance, and
- see if the crane or the load may contact overhead electric lines.

People using communication equipment should be familiar with the manufacturer's operating instructions. When using radios, a dedicated frequency should be selected for the duration of the crane operations to prevent interference with other radio equipment being used in the vicinity of the crane. Work should stop immediately if there is a loss of communication.

Further information on doggers and riggers is in section 6.4.

PRE-SLUNG LOADS

Extra caution should be applied when working with pre-slung loads as the condition of the load and equipment may be uncertain. For example, gear may have been certified but damage may have occurred and be concealed under the load. If a ship cannot produce the required certificate your own lifting gear should be used.

The following control measures should be considered for work involving pre-slung loads:

- maintaining and documenting a system of inspection—inspection should be done by qualified personnel and completed before all gear is used
- removing and appropriately tagging out of service damaged gear
- implementing exclusion zones in the vicinity of the lift
- providing workers with information, training and instruction to select the right gear
- supplying information before a ship's arrival and including pre-operational inspections and checks as part of the general inspection regime
- implementing an auditable system of certification of the SWL of gear used, and
- using gear only with reference to actual marked SWL and not basing selection on colour coding.

6.2 Lashing and unlashings containers

Vessel masters must ensure cargo is adequately secured.

The workers who will be performing the lashing or unlashings should be provided with information and instruction, for example at a pre-shift toolbox talk or a planning meeting.

This may include the lashing plan. Workers who are required to work on or near the vessel must be made aware of the exclusion zone protocols.

The safety of lashing positions on ships carrying containers should be assessed during vessel inspection. Lashing activities should not be carried out if lashing positions do not provide adequate protection against falls—see section 5.7. Any concerns should be recorded on the vessel inspection sheet and addressed before work commences.

DURING LASHING AND UNLASHING

Workers lashing and unlashings should never work alone. If there are teams working near each other, for example one lashing and one loading, ensure effective communication is maintained between the teams, supervisors, managers and ship's crew so each team is aware what the other is doing and safe areas of work are identified. Toolbox talks can be used to inform workers at the change of shift about safety issues related to the work and reminding workers of relevant safe work procedures.

Issues to be considered in planning and undertaking lashing include the weight and length of lashing bars, obstructions, working around raised hatch lids, container size and ship configuration.

Control measures for lashing and unlashings activities may include:

- having a system of inspections
- working from a stable surface
- positioning the body to keep out of reach of stored energy release from lashing equipment
- ensuring hatchway access covers can be securely pinned back
- maintaining an awareness of other operations in the area including crane movements and not working within exclusion zones
- ensuring at least one worker maintains control over the lashing gear when it is elevated
- ensuring lashing rods are never left hanging
- eliminating the practice of leaning lashing bars against containers during lashing work, where practical
- using PPE suitable for the task, and
- eliminating, or if not reasonably practicable, minimising double handling of lashing bars and equipment to minimise manual handling risk.

Where lashing equipment is to be re-used in the same work area it should be stored safely on the side of a walkway to minimise the risk of a trip hazard, as shown at Figure 1.

Figure 1 Safe storage of lashing bars to be reused



Stevedoring operations must occur within the limits of a severe weather event policy.

WORKING ON TOP OF CONTAINERS

When work is carried out on top of containers this can create a risk of falls. Further information about risks of falls is in section 5.7.

When work on container tops cannot be avoided safe means of access should be provided. Wherever possible this access should be part of the ship's permanent superstructure like lashing platforms.

When such access is not possible, safe access should be provided by the use of a crane and purpose-built work box or personnel cradle. Further information on crane personnel cradles or work boxes is in 7.2.3.

When work has to be carried out on container tops, suitable fall prevention or fall arrest systems of work should be devised and used in order to eliminate or control the risk of falling. Fall prevention systems include working from inside a work box or personnel cradle or secured to a short lanyard that prevents falls from open sides of containers.

When a work box or personnel cradle is used it can be moved slowly across the top of each tier of containers while workers in its place or remove twist locks. Communication with the crane operator should be maintained at all times to ensure safety of the workers in the work box or personnel cradle.

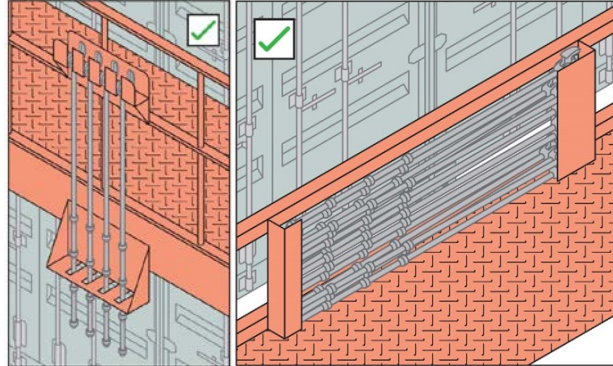
It may be necessary at times for workers to leave a work box or personnel cradle to go to the corners of the containers carrying equipment like twist locks, bridging pieces or locking poles. Where this is necessary, they should wear a full body harness and be connected to a secure anchorage point by lanyards, safety lines or inertia reel fall arrest equipment.

Work on top of containers should cease in high wind conditions.

BEFORE SHIP DEPARTURE

Once lashing and unlashings activities have finished excess lashing gear should be safely secured in designated stowage compartments, where available, in accordance with the vessel master's requirements—see Figure 2 below.

Figure 2 Preferred storage methods for lashing bars



6.3 Working in ships' holds

Management of the risks associated with ships' holds includes the management of the atmosphere in a hold—see section 5.4—and the prevention of falls—see section 5.7. Workers should be provided with the relevant information, instruction and training to handle the relevant cargo safely. The work environment should be safe for plant to operate and clear of obstructions and risks of falling cargo. There should be a system to identify safe zones for workers, considering mobile plant that may be operating in the hold and crane operations.

This section provides further details on control measures for hatches and openings, ladders and for monitoring cargo operations in holds.

WORKING WITH HATCHES AND OPENINGS

Hatches and openings that provide access to holds should be checked to ensure:

- hinged and pontoon hatch covers are secured, or removed if not adequately secured, to prevent them from accidentally closing during access
- approaches to a hold and an access hatch are kept unobstructed to reduce the risk of falls and to enable holds to be evacuated quickly in an emergency
- hatch covers are closed when the hatch is not in use to eliminate the risk of falls, and
- means of access includes a ladder which is clear of the hatchway through which cargo is loaded or unloaded.

Where hatch covers are raised, temporary fencing can be used as a control measure to prevent falls. Temporary fencing should be made up of:

- at least two parallel rails, ropes or chains
- the top rail, rope or chain is at least 90 cm above the walking surface
- the mid rail approximately halfway between the top rail and the walking surface
- if made of rope or chain it should be kept as taut as practicable, and
- fencing uprights should be no more than 2.5 metres apart.

Further information is in the *Good practice guideline: Working safely at height*

Mechanically operated hatch covers

Mechanical, hydraulic or electrically powered hatch covers should only be operated by designated members of the ship's crew or other authorised people. When operating these types of hatch covers:

- warn people in the vicinity of the hatch cover before the hatch is opened or closed and instruct them to move to a safe area
- clear people and objects from the hatch cover before it is opened, and
- position preventer chains or other securing devices before permitting people on top of a retracted hatch cover.

WORKING WITH LADDERS

The ship's permanent access should be the primary means of accessing cargo holds.

Guidance on the use of ladders for shore operations is in the *Good practice guideline: Working safely at height*

MONITORING CARGO OPERATIONS

Loading or unloading by means of a crane or derrick should not be carried out unless:

- the operator has an unrestricted view of the load at all times during loading or unloading, or
- a hatch man is employed for each crane or set of derricks who is clearly visible to the operator.

Where people are in a cargo space in connection with loading or unloading, whether or not a crane or derrick is being used, there should be a lookout who:

- has a good view of the space
- is able to see potential hazards to the people in the space
- is able to communicate with the people in the space, and
- is tasked with warning people in the space of any perceived hazard.

The cargo space lookout may be a person with other duties, like a hatch man or the crane operator, provided the person is capable of performing the duties assigned effectively.

Loading or unloading should not be carried out in a cargo space where two or more cranes or sets of derricks are working simultaneously and separately unless:

- a separate hatch man is provided for each crane or set of derricks
- where work is to be carried out at different levels, a net or other equivalent protection is rigged to prevent people and cargo falling from the upper level, and
- each hatch man is provided with a safe operating area on deck at a location that provides adequate visibility for the hatch man to carry out their function.

Further information on the use of cranes is in section 7.

6.4 Types of cargo

WORKING WITH GENERAL CARGO

When handling cargo, the inspection of wires, ropes, chains and lifting gear should be carried out.

Cargo must be handled within safe working load (SWL) limits for the plant to ensure this:

- establish cargo weights and consider these when determining lifting method and equipment to be used, and
- identify the SWL and make sure the plant or crane operator knows the weight of the load.

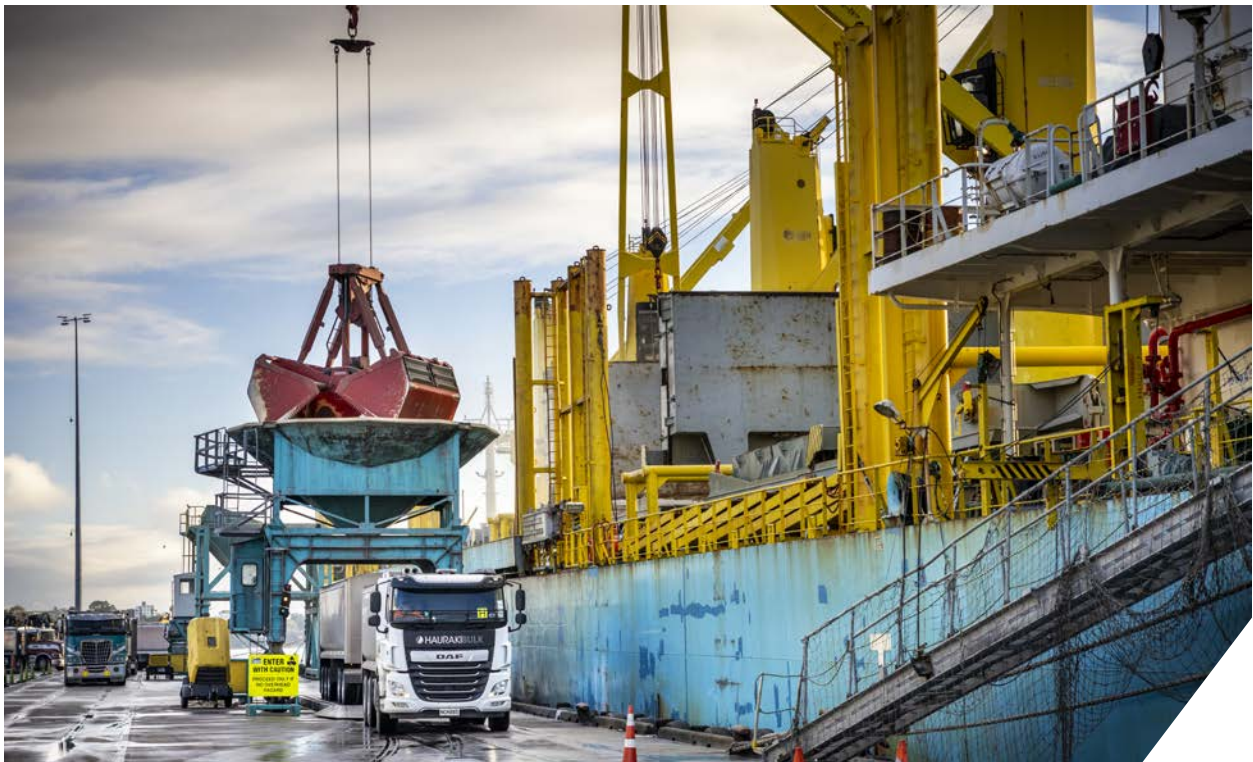
A trained and competent (to NZQA standards) dogger or equivalent is required when undertaking lifts requiring judgement or where the load is not always within view of the plant operator. The dogger or equivalent should assess the load before discharging and loading.-

Slings loads where judgment is not required, and the load is lifted within the view of the plant operator at all times is not defined as dogging work under the Act Regulations and a dogger is not required.

The dogger or rigger is responsible for the safe slinging and movement of the load and providing accurate directions to the crane operator on load movement to ensure crane and load stability. This includes:

- communicating the weight of the load to the crane operator to help ensure the rated capacity of the crane and lifting attachments is not exceeded
- calculating the safe working loads of the ropes, slings, chains and other lifting accessories to be used in the lift
- providing the crane operator with clear and accurate directions and communicating with other people in the crane working area, and
- taking precautions when directing a pick-and-carry crane across rough surfaces and checking the area for other hazards.

Provisions for monitoring cargo operations are in section 6.3.



WORKING WITH DRY BULK

Dry bulk is cargo shipped in large unpackaged amounts, for example fertilisers, grain, gravel, sand, salt, concentrates, wood chips, coal and mineral ores.

Before loading or discharge, dry bulk should be assessed for dangerous and hazardous substances. Dry bulk may consist of materials that emit dangerous gases, spontaneously combust, liquefy, develop hot spots, develop biological hazards or become unstable. Safety Data Sheets (SDSs) should be used in assessing the risks of hazardous substances.

Dust levels, wind speed and direction should be monitored to prevent risk from exposure, for example to the public, in utilities rooms and to other vessel operations. Dust types include explosive, toxic and nuisance dust. Fire risks should be identified, and adequately trained personnel and equipment provided at the workplace in response.

Where access to the hold is required for unloading bulk cargo a means of escape in case of emergency is needed. Where people and mobile plant are both working in the hold, they should be kept separate.

Ensure plant and equipment used for loading and unloading dry bulk, including conveyors, are fit for purpose, maintained and inspected as required.

ROLL ON ROLL OFF ACTIVITIES

RoRo activities involve the loading, unloading, lashing and unlashings of wheeled cargo. Critical areas for control in RoRo operations are the management of vehicle movements and of manual tasks. Information on traffic management for RoRo is also included in section 5.6.

Whenever multiple gangs are working in the same area or at the same time, like a gang lashing and one unlashings controls should be in place so one gang does not adversely impact the safety of another.

MANUAL TASKS IN ROLL ON/ROLL OFF ACTIVITIES

Control measures for managing manual tasks for RoRo may include:

- using levers, ratchet binders, extension bars
- having appropriate power units to jump start vehicles
- using correct techniques for lashing and unlashings
- rotating tasks to reduce exposure to highly repetitive manual tasks, and
- ensuring lashing straps under cars are reasonably easy to get on and off.

Further guidance about managing the risks associated with manual handling is in the *Worksafe Fact Sheet: Preventing manual handling injuries*

6.5 Storage, stowage and securing of cargo

Cargo not in containers, for example coils, pipes and beams, should be stored or stowed in stable stacks. Cargo may be moved repeatedly during loading, discharging and storage.

This may create new risks or change already identified risks. Ongoing risk management is required to ensure these risks are eliminated or minimised.

Ensure there is a plan for stacking cargo which considers the:

- floor capacity of the storage area
- type, dimensions and weight of cargo and method of storage
- potential for stored energy due to stacking arrangements
- safe access and egress for workers
- mechanical handling equipment and ability to operate it safely
- exclusion zones to separate mobile plant and people
- storage or separation requirements of hazardous chemicals or dangerous goods
- length of time the goods or material will be kept, and
- stability and securing devices for different types of cargo.

Control measures for safe storage include:

- ensuring stacks of goods remain stable—the maximum height of the stack is determined by the need to ensure the stability
- ensuring coils:
 - are used with end stops in the vicinity of pedestrian walkways
 - are supported by coil collapse arrest systems when in the vicinity of amenities or offices
 - using racking systems where appropriate
 - using concrete barriers
- using dunnage correctly including:
 - using means other than hands to place dunnage under loads
 - avoiding placing hands or limbs under loads during glutting
- using correct chocking methods like:
 - fixed chocks at the end of walkways
 - materials used for chocking and dunnage are fit for purpose and sufficient to withstand the weight of the load
 - using bolsters at the end of walkways
 - identifying and communicating the load bearing capacity of floors, and
 - maintaining exclusion zones where identified.

7 PLANT AND EQUIPMENT

All PCBUs with management or control of plant to manage health and safety risks associated with the plant, as well as requirements for powered mobile plant and plant that lifts or suspends loads.

The person conducting the business or undertaking should ensure an up-to-date register of the items of plant requiring regular inspection and maintenance is kept. It should include information on:

- allocated responsibilities for people dealing with inspections
- standards against which plant should be inspected
- the frequency of inspections
- critical safety instructions to be followed during inspection e.g., the isolation procedure
- the procedures for particular types of inspections
- specific tests
- repaired or modified plant, and
- variations from normal operation or dangerous occurrences and any trends that may be occurring.

If maintenance or repair work is required during loading or unloading assess risks associated with the work and eliminate, or if this is not reasonably practicable, minimise these risks so far as is reasonably practicable. The risk assessment should consider:

- the safety of people who may be affected by maintenance or repair work not just those carrying out this work
- dangerous substances, for example noxious gases, fumes or dust
- noise from the repair work or that workers carrying out repairs will be exposed to, and
- whether the repair work is likely to obstruct, interfere with or distract workers involved in loading or unloading.

7.1 Powered mobile plant

Stevedoring operations include the use of powered mobile plant like mobile cranes, reach stackers, straddle carriers and forklifts.

Health and Safety in Employment Regulations

Self-propelled mobile mechanical plant

Every employer must, so far as is reasonably practicable, ensure that every self-propelled mobile mechanical plant to which this regulation applies is fitted with a roll-over protective structure and a seat belt.

Every employer must, so far as is reasonably practicable, ensure—

1. That every roll-over protective structure fitted to a self-propelled mobile mechanical plant pursuant to subclause (1) is suitable for the purpose for which it is to be used; and
2. that every seat belt fitted to a self-propelled mobile mechanical plant pursuant to subclause (1) is of a kind, and fitted in a manner, that is suitable for the purpose for which it is to be used.

7.2 Cranes

Inspections, tests and preventative maintenance must be carried out according to the manufacturer's instructions or those of a competent person to control the risk of structural or mechanical failure, collapse and decreased safety in crane operations.

Lifting procedures should be developed to help define roles and responsibilities and ensure the crane operation is approached in a systematic way, particularly in the following situations:

- heavy lifts
- lifting work boxes, and
- tandem or dual lifts.

Procedures should be implemented to enable workers to report signs of damage or defect associated with the crane.

TANDEM OR DUAL LIFTS

Lifting a load with two or more cranes requires more detailed planning and supervision to control the risks. This is because the effects of the relative movement between the cranes may create extra loading on the cranes, the load and the lifting gear. Further information is in the *Approved Code of Practice for Cranes*

7.2.1 Ship-based cranes

A pre-operational inspection should be carried out for ship-based cranes to check:

crane brakes, limiting devices and emergency controls are fully operational

- for obstructions impairing safe operation e.g., oil, debris or structures like cable trench, rollers and rail tracks
- the ship's gear register if completed
- the safety of crane access ladders or stairs including surfaces and lighting, and
- emergency escape provisions are provided and suitable.

For rail-mounted cranes, inspections should include ensuring:

- track wheels at deck level are fitted with foot guards
- collision prevention devices are fitted where more than one crane is located on the same track, and
- locking devices on overside extensions are engaged.

Information on monitoring cargo operations during loading and unloading is in section 6.3.

7.2.2 Shore-based cranes

The inspection regime for shore-based cranes includes:

- annual inspections
- routine inspections and maintenance, and
- pre-operational inspections.

WEATHER CONDITIONS

Adverse weather conditions in which lifting operations may need to be reassessed include:

- high winds
- lightning
- poor visibility due to rain, snow and fog, and
- significant vessel movement.

Crane operators should base their decision to make a lift on the information provided by the crane manufacturer, advice provided by competent people like a rigger or engineer and their experience as a crane operator.

Decisions may include ceasing crane operations if there is a serious risk arising from exposure to an immediate or imminent hazard, for example the possibility of the crane being struck by lightning. Any crane struck by lightning must be thoroughly examined before being returned to service.

Securing devices

Brakes should be maintained in a safe and serviceable condition and able to prevent unpredictable movement in high wind. For example, the crane's slewing brake should be capable of holding the jib stationary, with the maximum SWL suspended at its maximum radius when a maximum in-service wind acts in the most adverse direction.

When high wind speeds are expected, secure cranes in their appropriate out-of-service condition. If this requires the raising or lowering of a jib, have a planned procedure in place to ensure there is adequate time and space to do so. Cranes secured at picket points should be travelled against the wind to the nearest picket position and the storm anchor inserted.

Rail-mounted cranes taken out-of-service in high winds should be secured using securing devices designed for the purpose, for example storm pins or bolts that can be inserted into a socket in the quay surface, rail clamps, wheel scotches and chains.

EMERGENCY PROCEDURES

The workplace where the crane will operate must have an emergency plan with an effective response to evacuate people from the vicinity of the crane in a controlled manner. Section 3.2 has further information about emergency plans.

A reliable and effective means of communication should be established between all workers in the vicinity of the crane to permit and ensure effective evacuation from danger areas.

Contact numbers for emergency services should be prominently displayed.

Emergency procedures should be communicated to relevant workers and include information about:

- using warning systems and what to do when they sound
- shutting down the crane safely
- evacuating the crane and the area nearby in a controlled way
- accessing and providing first aid treatment, and
- using firefighting and rescue equipment and where to find it.

7.2.3 Crane personnel cradles or work boxes

The person with management or control of plant at a workplace must ensure, so far as is reasonably practicable, that the plant used to lift or suspend a person or thing is specifically designed to lift or suspend the load.

Plant not specifically designed to lift or suspend a person

The person with management or control of the plant at a workplace must ensure that:

- the persons are lifted or suspended in a work box that is securely attached to the plant
- the persons in the work box remain substantially within the work box while they are being lifted or suspended
- if there is a risk of a person falling from a height, a safety harness is provided and worn by the person in order to prevent, so far as is reasonably practicable, injury to the person as a result of the fall, and
- means are provided by which the persons being lifted or suspended can safely exit from the plant in the event of a failure in its normal operation.

Crane work boxes or personnel cradles should have:

- the SWL, tare mass, maximum number of occupants and design registration number marked on the work box or personnel cradle
- gates that are inward opening only, self-closing and provided with a latch to prevent unintentional opening
- fall-arrest anchorage points, and
- sides not less than one metre high.

When using crane work box or personnel cradle the crane should:

- be equipped with a secondary back-up system to prevent the load from falling if the primary lifting device fails
- have a minimum rated capacity of at least twice the total load of the work box or personnel cradle and its contents
- have levers and foot pedals fitted with a constant pressure system that stops the crane's motions when the operator removes pressure from the controls, and
- if fitted with a free fall facility have the free fall function positively locked out to prevent inadvertent activation.

In addition to the above the service history of the crane work box or personnel cradle should be in place to ensure it has been maintained and is safe to use.

The crane should be fitted with an emergency stop device which:

- removes the energy supply to the crane and brings the crane to a complete stop when activated
- is readily visible and coloured red
- is easily accessible and located so the operator will not be exposed to other hazards when activating the device, and
- locks in the stop position when activated and requires a manual reset.

When working from a work box or personnel cradle procedures should be in place to ensure:

- the rated capacity of the work box or personnel cradle is not exceeded
- the work box or personnel cradle is not suspended over people
- the work box or personnel cradle is designed for the task and securely attached to the crane
- the work box or personnel cradle, lifting attachments and records have been inspected by a competent person and deemed safe prior to use
- the work box or personnel cradle is only used to lift workers and materials necessary to carry out the work
- the crane is suitably stabilised while the work box or personnel cradle is used
- the crane is not used to simultaneously raise, lower or suspend another load while the work box or personnel cradle is suspended from it
- the crane operator remains at the controls of the crane
- there is direct visual communication or other equally effective method of communication between the crane operator and personnel in work box or personnel cradle
- movements of the work box or personnel cradle are at slow speeds with minimum acceleration and deceleration
- flammable liquids and oxygen and acetylene cylinders are correctly secured and no more than the minimum quantities sufficient to carry out the work are carried
- if flammable liquids or gases are carried a suitable fire extinguisher is also carried
- workers are attached to the anchorage by a lanyard and harness unless the work box or personnel cradle is fully enclosed
- the work box or personnel cradle is not used in high winds or other adverse weather conditions, like electrical storms, which could affect the safety of workers
- personnel do not enter or leave the work box or personnel cradle when elevated except in an emergency unless:
- a risk analysis shows this means of access is safer than all other alternative means
- the structural adequacy of the landing area has been established and the landing area is clear
- an appropriate work procedure has been developed and implemented for the operation
- where the landing is on the edge of a structure the:
 - maximum gap between the work box or personnel cradle and landing does not exceed 100 mm
 - work box or personnel cradle is secured to a suitable point on the landing, and
 - access and egress does not take place unless a fall arrest harness is properly worn and attached to a suitable anchorage on the structure.

7.3 Other lifting equipment

Lifting equipment like spreaders, slings and hooks used on shore and on-board vessels to raise, suspend and lower loads should be well maintained and regularly inspected and tested. Shipboard cranes maintenance records should be checked and any issues with the lifting equipment corrected before they are used.

LOOSE GEAR FOR LIFTING

Ensure that the lifting equipment like spreader bars and beams, slings, chains and hooks is:

- in serviceable condition
- suitable for the task and of adequate capacity for the load being lifted with an appropriate safety factor, and
- appropriately certified.

Developing a lifting plan which documents the control measures may assist in minimising the risk of incorrect equipment or methods being used. A rigging chart may be developed to ensure appropriate lifting techniques are used with the safest lift angles. Consider all securing methods, for example single or double wrap and chains. Specific lifting or slinging methods may be necessary to eliminate or minimise the risk of a load slipping, for example double wrap or single choke with sliding ring. Consider the condition of equipment, including age and wear.

It is important to check the gear register and certificates relating to lifting gear, but not to rely solely on paperwork as it may be inaccurate or inadequate.

Lifting gear should be inspected by a suitably qualified person, certified and tagged.

Regular visual inspection of lifting equipment should be carried out during operation by a suitably qualified person, for example a rigger. Slings should be protected from sharp edges.



APPENDICES

APPENDIX A – KEY TERMS

Access hatch (man-hatch) provides access for people into and out of a hold.

Break bulk means non-containerised cargo transported as individual pieces due to it being oversized and overweight e.g., construction equipment, oil and gas equipment, wind towers and steel.

Bulk means a product not separately packaged but rather is loaded in bulk onto a ship e.g., grain, liquids, iron ore and coal.

Common user means a facility where multiple operators share the same wharf, apron or vessel.

Cargo space for a vessel, means a space intended for the carriage of cargo including a trunk way or hatchway to the space.

Container operations means the loading and unloading of container cargo.

Derrick means a ship's derrick having a boom which may be raised, powered and slewed transversely while supporting a load by means of winches which either form an integral part of the arrangement or are used primarily with it.

Dogging work means work involving either the application of slinging techniques, including the selection and inspection of lifting gear, to safely sling a load; or the directing of a plant operator in the movement of a load when the load is out of the operator's view.

Dogger means someone who carries out dogging work.

Dunnage means loose wood, matting or similar material used to keep a cargo in position in a ship's hold.

Facility means a workplace where stevedoring operations are carried out including common user sites.

General cargo means cargo susceptible for loading in general, non-specialized stowage areas or standard shipping containers e.g., boxes, barrels, bales, crates, packages, bundles and pallets.

Grid means part of a container terminal to which access by road vehicles is permitted in order to deliver and collect containers from container-stacking areas. Also referred to as an interchange area.

Hatch or hatchway mean an opening that provides access to a cargo space for loading or unloading.

Hatch cover means a mechanical device which allow hatches to be opened and closed.

Lashing secures cargo preventing movement during transport.

Pure car carriers (PCC) means a vessel that transports cars only.

Personnel cradle means a device attached to a lifting appliance or crane for the purpose of lifting people (see also work box).

Roll on/roll off (RoRo) means loading and unloading of cargo via a ramp e.g., cars and bulldozers.

Safe Working Load (SWL) means the maximum gross load that may be safely lifted by a lifting appliance or item of loose gear in a given condition. Note: SWL may also be called 'rated load' or 'working load limit (WLL)'.

Straddle carrier means a tall, wheeled, frame type of mobile plant, wide enough to move astride a container and lift it by means of a suspended spreader, used for stacking and transferring containers.

Terminal means a maritime container terminal where containerised cargo is moved between different transport mediums for onward transportation. A typical container terminal consists of the water-side berth for docking the ships, a large, paved yard for the short-term storage of containers, specialised cranes, tractors and other plant and equipment for handling the containers, and a secured gatehouse to control entry and exit of vehicles and containers.

Twist lock means a standardised rotating connector for securing shipping containers.

They are primarily used for locking a container into place on a container ship, semi-trailer truck or railway container train and when lifting containers.

Work box means personnel carrying device designed to be suspended from a crane to provide a working area for a person elevated by and working from the work box (see also personnel cradle).

Workplace means a place where work is carried out for a business or undertaking. It includes any place where a worker goes, or is likely to be, while at work. A workplace includes:

- a vehicle, vessel, aircraft or other mobile structure, and
- any waters and any installation on land, on the bed of any waters or floating on any waters.

APPENDIX B – EXAMPLE OF MANAGING RISKS IN STEVEDORING

EXAMPLE: A general cargo vessel arrives for discharge, the vessel has pre-slung steel pipe in the hatch. The pipe is stacked approximately 6 m high in the hatch.

	What hazards are encountered when doing the task?	What risks do these pose to the health and safety?	How are these hazards and risks controlled?
Handling loads	<p>Suspended loads</p> <p>Broken crane wires</p> <p>Damaged slings</p> <p>Damaged pre-slung wires</p>	Crane – damaged crane wires or slings could cause cargo to fall, causing a serious injury or fatality	<p>An assessment of the lift has been completed and the lift method and equipment has been checked by a competent person</p> <p>Crane has a pre-operational inspection</p> <p>Vessel to have pre-vessel inspection completed</p> <p>The weight of the load is known and less than SWL of the lifting equipment</p> <p>Exclusion zones established to prevent people and forklifts interacting</p> <p>Pre-slung wires, lift certificates are provided</p> <p>Operators of powered lifting devices are trained and competent for the equipment</p> <p>Clear communication methods are maintained between ship and shore personnel</p>
Manual handling	Attaching or detaching cargo to hook	Heavy chains can cause injury when attaching or detaching to crane hook	<p>Manual handling training provided to reinforce safe lifting methods</p> <p>Workers to assist each other when attaching wires and chains to crane hook</p>
Working at heights	Working on top of cargo	Fall from height	<p>Workers must be trained in working at heights procedures</p> <p>Working at heights gear must be checked before use</p> <p>Anchor points are checked to withstand and capable meeting the load</p>

	What hazards are encountered when doing the task?	What risks do these pose to the health and safety?	How are these hazards and risks controlled?
Mobile equipment	Collision mobile equipment and pedestrians	Forklift colliding with workers, causing serious injury or fatality Trucks, moving cargo colliding with workers	Pre-operational checks are completed before equipment is operated Equipment is only operated by licensed and competent personnel Drivers do not use mobile phones or unauthorised electronic equipment whilst driving
Pedestrians	Integration with mobile plant and equipment	Forklift colliding with pedestrians Visitors and contractors on site	Pedestrians must use marked walkaways Exclusion zones implemented on site to prevent pedestrians entering operational areas Traffic management plans developed on site, to ensure that all stakeholders are clear on requirements on site PPE is worn in operational areas

APPENDIX C – EXAMPLE CHECKLIST FOR VESSEL INSPECTION – CONTAINER OPERATIONS

Vessel:

Date and time:

Inspection conducted by:

Vessel representative.

Terminal representative

Inspection areas	Yes	No	N/A	Comments
1. Access and egress				
Gangway in a suitable position, secured and netted				
Gangway kept clear of quay cranes and not impede crane travel				
Gangway signage in place and secure at the wharf side access point				
Gangway kept fully lowered				
Hatchway covers above ladders in place & can be secured				
Handgrips present at top of ladder				
Access hatches are of suitable size to access freely				
Working space is clear of obstructions				
Walkways are in good condition and free of obstructions, with excess lashing gear suitably stacked to remove slip and trip hazards				
Lashing points accessible				
Vertical ladders >3 m have safety hoops—bottom hoop is at least 2 m from the base of the ladder				
Provision of safe access and egress to under deck stows				
2. Edge protection				
Outboard cells are provided with safety rails sufficient to prevent a person falling overboard				
Provision of 2 parallel railings—top and mid-rail—around open hatches and outboard cells including safety chains				
Continuous rails—rope or wire—are taut and in good condition				
Metal stanchions are 1 m in height and no more than 2.5 m apart and secured in position				
3. Housekeeping				
Lifebuoy accessible and visible				
Hazardous substance containers checked for leaks				
Fire and emergency equipment including warning alarms functional and in suitable positions				
4. Lashing and twist locks				
Lashing gear, unlashings poles, bars, spanners etc are accessible and appear to be in serviceable condition				

Inspection areas	Yes	No	N/A	Comments
High lashing bars can be handled using appropriate manual handling technique				
Are lashings and twist locks of a consistent type and style				
Are twist locks compatible with plant and equipment				
Bins and racks for stowage of lashing gear are provided and accessible at point of work				
Walkways are clear of excess lashings, loose gear and other trip hazards				
Cell guides in good condition				
Do the 20' containers loaded on deck need to be lashed in the centres				
Does the vessel's container stowage and configuration—20'/40'—cause a change in the lashing and fall protection on the outboard cells regarding protective fencing				
5. Lighting				
Adequate lighting is provided at points of work for lashing and unlashings and cargo operations				
6. Ships gear and cranes				
Inspection and maintenance logs kept and available for wires and lifting gear, only where applicable e.g., chains, slings				
Ships crane stowed to waterside and boom below the top of crane pedestal—only where required				
Slings for pre slung cargo are accessible with SWL displayed				
7. Reefers				
Cables are stowed away clear of walkways and work areas				
Power can be isolated at the board in vicinity to lashing activities				
Reefer cables of import boxes are unplugged & rolled up by crew and placed in storage compartment of container before discharge				
8. Notice of deficiency				
Outstanding Notice of Deficiencies—attach copy				

APPENDIX D – EXAMPLE CHECKLIST FOR VESSEL INSPECTION – BULK AND GENERAL OPERATIONS

Facility Name:		
Vessel Name:	Date:	Time:
Name of Person Responsible for Inspection:		
Signature:		

Item		Yes	No	Comment
1	Safe access from wharf to vessel	<input type="checkbox"/>	<input type="checkbox"/>	
2	Safe onboard access, clear alleyways to and from work areas	<input type="checkbox"/>	<input type="checkbox"/>	
3	Safe access to cargo gear operating areas	<input type="checkbox"/>	<input type="checkbox"/>	
4	Safety rails rigged in work areas and lashing platforms	<input type="checkbox"/>	<input type="checkbox"/>	
5	Confirmation ships gear conforms	<input type="checkbox"/>	<input type="checkbox"/>	a) Date last four or five yearly: (Indicate four or five as applicable) Surveying Authority: b) Date Last Annual: c) Random Gear Item Check <div> Item ID Sited Endorsement i) YES NO ii) YES NO </div>
6	Are fire hoses and firefighting equipment on board and ready with international shore connection	<input type="checkbox"/>	<input type="checkbox"/>	
7	Workspaces are adequately ventilated, and atmosphere is safe	<input type="checkbox"/>	<input type="checkbox"/>	
8	Information has been provided on hazardous or dangerous goods cargos and confirmation this cargo is intact with no flammable or toxic spillage	<input type="checkbox"/>	<input type="checkbox"/>	
9	Confirmation an adequate mooring watch will be maintained	<input type="checkbox"/>	<input type="checkbox"/>	
10	Confirmation of emergency procedures	<input type="checkbox"/>	<input type="checkbox"/>	
11	Vessel and wharf operational areas adequately lit	<input type="checkbox"/>	<input type="checkbox"/>	
12	Agreement regarding order of load, discharge and cargo placement	<input type="checkbox"/>	<input type="checkbox"/>	

13	Specific advice regarding abnormal stow conditions or special requirements e.g., lashing, tommying off, dunnaging, glutting, securing requirements	<input type="checkbox"/>	<input type="checkbox"/>	
----	----------------------------------------------------------------------------------------------------------------------------------------------------	--------------------------	--------------------------	--

Item		Yes	No	Comment
14	Vessel advised of person responsible for stevedoring operations, contact numbers, structure and allocation of workforce	<input type="checkbox"/>	<input type="checkbox"/>	
15	Start with and maintain a clear and uncluttered wharf face operational area	<input type="checkbox"/>	<input type="checkbox"/>	
16	Confirm machinery to be used onboard and on wharf for practicality and suitability	<input type="checkbox"/>	<input type="checkbox"/>	
17	Stevedoring equipment to be used, with specific consideration given to suitability, condition and SWL of slings and rigs. This includes consideration of ship and shore gear SWL in regard of lifts to be taken	<input type="checkbox"/>	<input type="checkbox"/>	
18	Establish traffic flow patterns to deliver cargo or remove cargo from the wharf landing area—under hook. Crossing of machinery paths shall be minimised and controlled. Ensure traffic way are clear and unobstructed	<input type="checkbox"/>	<input type="checkbox"/>	
19	Wharf landing area—under hook—prepared with appropriate gluts, landing platforms or safe means by which cargo is positioned before slinging or unslung	<input type="checkbox"/>	<input type="checkbox"/>	
20	Stevedoring personnel equipped with the skills necessary to carry out the intended operation and fitted out with the appropriate PPE	<input type="checkbox"/>	<input type="checkbox"/>	
21	Stevedoring personnel have a clear understanding of gear and rigs to be used and how cargo is slung or unslung	<input type="checkbox"/>	<input type="checkbox"/>	
22	In the case of bulk cargoes, wharf face personnel will have clear instructions regarding cargo receipt e.g., backing trucks loaded with coal into dump bins before lifting on board or delivery e.g., operating a hopper to load product into a truck	<input type="checkbox"/>	<input type="checkbox"/>	
23	Have wharf face operations been assessed and barricades established separating operational aspects to maintain safe work areas	<input type="checkbox"/>	<input type="checkbox"/>	

**THIS CODE OF PRACTICE
PROVIDES PRACTICAL
GUIDANCE FOR PERSONS
CONDUCTING A BUSINESS
OR UNDERTAKING ON
HOW TO MANAGE
HEALTH AND SAFETY
RISKS ASSOCIATED
WITH STEVEDORING.**